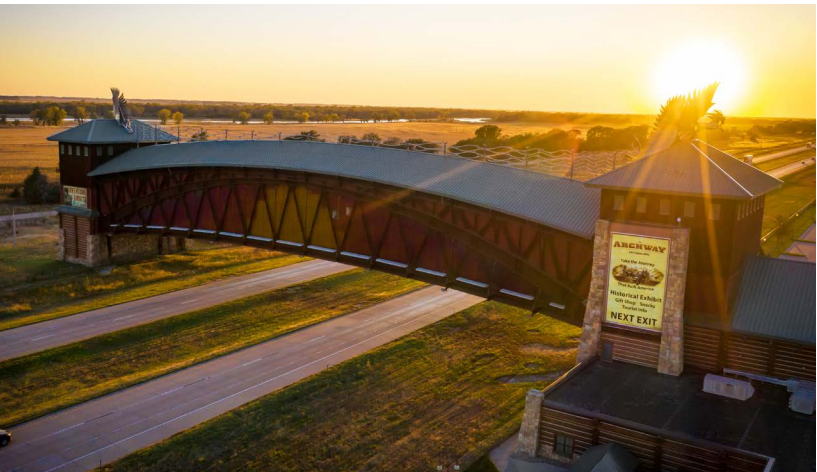


# KEARNEY

## NEBRASKA

### KEARNEY PROVIDES:

- 1,800 affordable hotel rooms
- Free hotel parking
- Motorcoach friendly restaurants within walking distance of hotels
- Variety of unique shopping opportunities



### COMPLIMENTARY SERVICES:

- Sample Itineraries
- Step-On Guides
- Personal Welcome
- Welcome Bags

### IT PAYS TO STAY!

Get \$100 when you stay overnight in Kearney!

\* Must have 15 or more paid rooms.



[VISITKEARNEY.ORG](http://VISITKEARNEY.ORG)

FOR INFORMATION CONTACT:

**ROGER JASNOCH, CTP**

[rjasnoch@visitkearney.org](mailto:rjasnoch@visitkearney.org) • 308-237-3161

Kearney, where the Heartland gathers.



### THE ARCHWAY - 1.5 - 2 HRS.

Walk with the pioneers over the Oregon Trail, watch a rider switch horses at a Pony Express Station and relive the building of the transcontinental railroad. All this history, and more, happened right here along the Platte River in Nebraska, and the Archway's family-friendly exhibit brings our rich history to life. Call for group rates or to set up a catered meal for your visit.

877-511-2427 • [archway.org](http://archway.org)



### G.W. FRANK MUSEUM OF HISTORY - 1 HR.

Take a walk through Nebraska history! This beautiful, sandstone mansion was among the first electrified houses in the American West. It later became part of the Nebraska State Hospital for Tuberculosis. Exhibits and programs focus on the history and culture of central Nebraska. Located on the UNK campus.

308-865-8284 • [frank.unk.edu](http://frank.unk.edu)



### TRAILS & RAILS MUSEUM - 1 HR.

The museum has six historic buildings, as well as a livery barn, a blacksmith shop and a Union Pacific steam engine and caboose. The Family History Center houses the extensive archive department. Join us for several special events through-out the year! Located on the original Mormon Trail route. Owned and operated by the Buffalo County Historical Society.

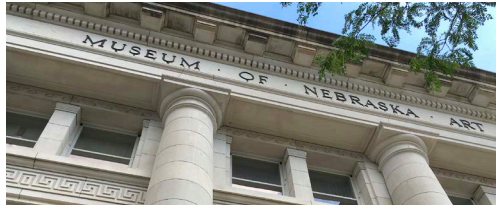
308-234-3041 • [bchs.us](http://bchs.us)



### CLASSIC CAR COLLECTION - 1 HR.

The best public car attraction between Chicago and Denver that includes 200+ automobiles from the early 1900's to 1980's. Located adjacent to Cabela's. 3600 East Hwy 30.

308-234-1964 • [ccc Kearney.com](http://ccc Kearney.com)



### MUSEUM OF NEBRASKA ART - 1 HR.

Experience Nebraska through the state's only collection of fine art. Listed on the National Register of Historic Places.

**CLOSED UNTIL 2023 FOR RENOVATION/ADDITION**

308-865-8559 • [mona.unk.edu](http://mona.unk.edu)



### NEBRASKA FIREFIGHTERS MUSEUM - 1 HR.

The museum is designed to safeguard and preserve Nebraska's proud firefighting heritage and to educate about fire prevention.

308-338-3473 • [neffm.org](http://neffm.org)



### FORT KEARNY STATE HISTORICAL PARK - 1 HR.

Built to protect Overland Trail travelers, Fort Kearny SHP near Kearney was a stage location, home station for the Pony Express, outfitting depot for Indian campaigns and home of the Pawnee Scouts. The stockade, parade grounds and blacksmith shop have been rebuilt. The Visitors Center is open Memorial Day weekend through Labor Day weekend, 9 am- 5 pm and during Sandhill Crane spring migration.

308-865-5303

[outdoornebraska.gov/fortkearny](http://outdoornebraska.gov/fortkearny)

### MORRIS PRESS - .5 HR.

One of the nation's largest cookbook publishers, is proud to invite you to visit their shop, "Leafie Mae's Kitchen." Browse through thousands of overrun cookbooks priced between \$2 and \$4 each.

308-236-7888 3212 • East Hwy 30



### SANDHILL CRANE MIGRATION

For six weeks, late February to early April, more than 80% of the world's population of Sandhill Cranes stop along the Platte to rest and refuel. They travel from southern wintering grounds to northern breeding grounds in Canada, Alaska and Siberia. Whooping Cranes, eagles, ducks, geese and shorebirds are among the other wildlife that migrate. For crane viewing information contact Ian Nicholson Audubon Center, Gibbon

308-468-5282 • [rowe.audubon.org](http://rowe.audubon.org)

### DOWNTOWN KEARNEY

Looking for a unique location to hold a meeting or reception? Downtown Kearney has everything you need including location, food, shopping and more!  
[downtownkearney.com](http://downtownkearney.com)

308-708-9004 • [downtownkearney.com](http://downtownkearney.com)



### PERFORMING ARTS

Whether your group enjoys the symphony, a musical, or the great acts of a play, Kearney has it all! We have numerous venues that host a variety of entertainment all year round. Call the Kearney Visitors Bureau or go to [visitkearney.org/events](http://visitkearney.org/events) for upcoming performances.

### LINCOLN HIGHWAY SCENIC BYWAY

The Lincoln Highway was one of the earliest transcontinental highways for automobiles across the U.S. Situated along the Lincoln Highway, a.k.a. Highway 30, Kearney has many historical attractions and sites along the route, including a restored theater, Lincoln Highway mural and more.

[lincolnhighwaynebraskabyway.com](http://lincolnhighwaynebraskabyway.com)



LINCOLN  
L  
HIGHWAY